



PROCOLOMBIA

EXPORTACIONES TURISMO INVERSIÓN MARCA PAÍS

COLOMBIAN 
OFFER FOR





METALMECÁNICA
Y OTRAS INDUSTRIAS

COLOMBIAN OFFER FOR BUSINESS MATCHMAKING HONG KONG 2019



PROCOLOMBIA
EXPORTACIONES TURISMO INVERSIÓN MARCA PAÍS



WOOD



PROCOLOMBIA
EXPORTACIONES TURISMO INVERSIÓN MARCA PAÍS

EXPORTEMOS COLOMBIA SAS

<http://www.exportemoscolombia.com>

EXPORTEMOS
Colombia - Caribe

- EXPORTEMOS COLOMBIA SAS is a company that generates solutions in Foreign Trade, taking advantage of the tools offered by technology and modern times. Due to that, they offer the tools and services necessary for the promotion of products..

PRODUCT PORTFOLIO

- Cocobolo, Cumaru, Teak, Santos Mahogany, Eucalyptus, Acacia

VOLUME AND PRODUCTION CAPACITY

- N/A

CHANNEL

- Direct sales

BUSINESS MODEL

- N/A

MAIN EXPORT DESTINATIONS

- India

CERTIFICATIONS

- N/A



TRANSER TK

<https://transer-tk-ci-sas.business.site/>



- Transer TK is a company dedicated to the commercialization of Cumaru wood.

PRODUCT PORTFOLIO

- Teak

VOLUME AND PRODUCTION CAPACITY

- N/A

CHANNEL

- N/A

BUSINESS MODEL

- N/A

MAIN EXPORT DESTINATIONS

- India and Vietnam

CERTIFICATIONS

- N/A



LOS CEDROS

<http://www.loscedros.com.co>



- Colombian company with more than 20 years in the wood sector, which is why they have become leaders in the production and commercialization of decks and timber at the International level. They offer wood types like IPE Decking, Cumarú Decking, Teca blocks, Balsam blocks, Cumarú Blocks, Teak logs

PRODUCT PORTFOLIO

- IPE Decking, Teak blocks, Balsam blocks, Cumarú Blocks, Teak logs

VOLUME AND PRODUCTION CAPACITY

- N/A

CHANNEL

- Direct sales

BUSINESS MODEL

- N/A

MAIN EXPORT DESTINATIONS

- China, United States, India, Mexico

CERTIFICATIONS

- N/A



BALSA DE COLOMBIA LTDA



www.balsadecolombia.com.co

- Company dedicated to the reforestation, processing and commercialization of balsa wood. Its main client are modeling companies or model airplanes and art stores.

PRODUCT PORTFOLIO

- Balsa wood

VOLUME AND PRODUCTION CAPACITY

- N/A

CHANNEL

- Direct

BUSINESS MODEL

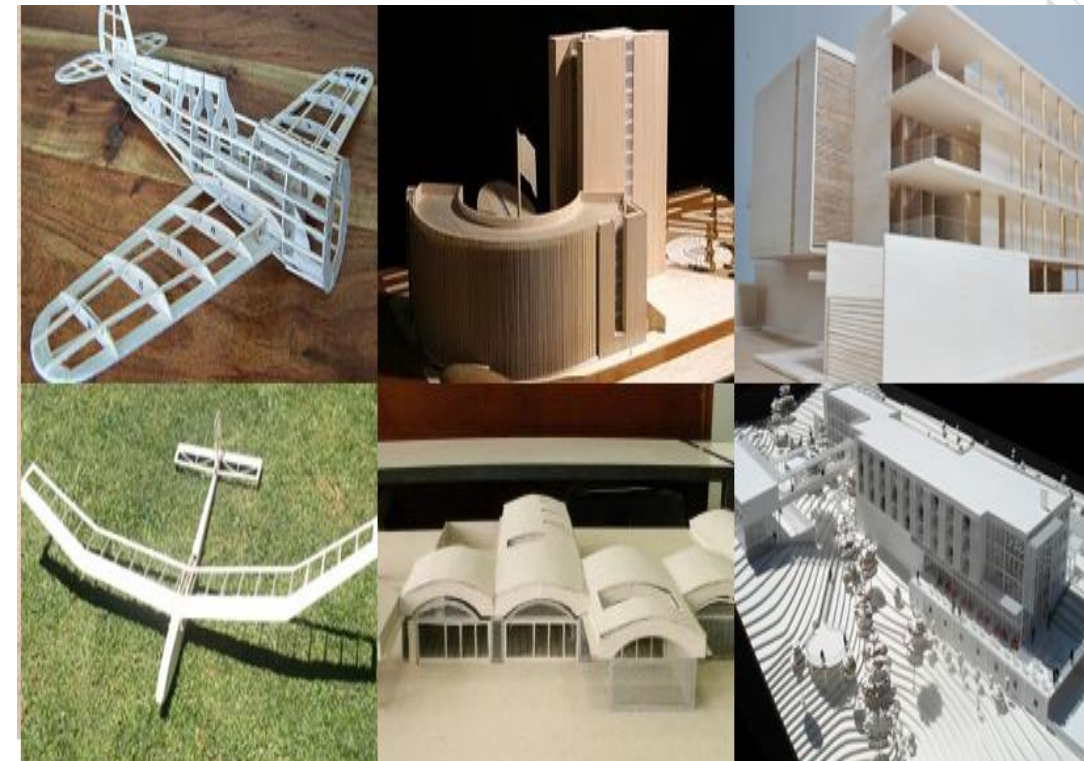
- Own Brand
- Private Label

MAIN EXPORT DESTINATIONS

- Switzerland

CERTIFICATIONS

- Forest Stewardship Council



MADERINCO LTDA



www.maderinco.com

- Commercializer of immunized wood species Pino Pátula. Focused on the construction, assembly and installation of products manufactured with immunized wood. Over the years, the company has been consolidated with a broad sense of social and environmental responsibility, an aspect that is reflected in the acquisition of wood from reforested forests.

PRODUCT PORTFOLIO

- Immunized wood

BUSINESS MODEL

- B2B

VOLUME AND PRODUCTION CAPACITY

- According to the requirements agreed in the negotiation

CHANNEL

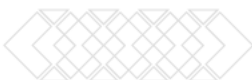
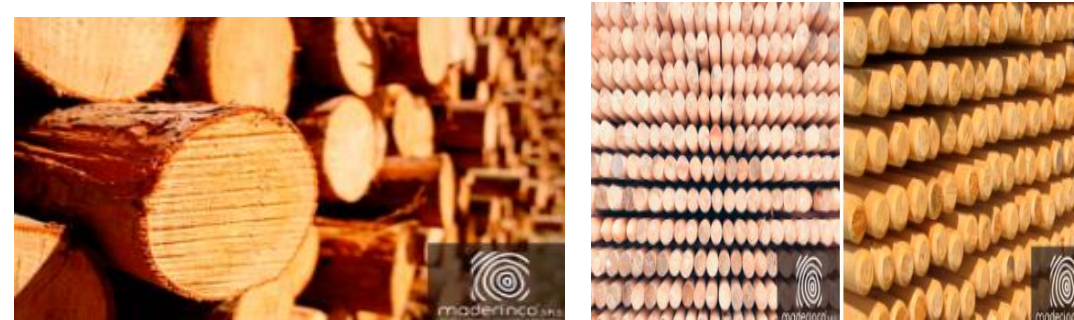
- B2B

MAIN EXPORT DESTINATIONS

- Costa Rica and Panama

CERTIFICATIONS

- ISO 9001
- Warranty 20 years for the immunization of wood



MADERAS SANTA RITA



- Company dedicated to the production of wood of different species with the highest German and American technology for cutting, drying and molding the final products.

PRODUCT PORTFOLIO

- Squared or block wood, Cut wood AD, Cut and dried wood KD 10-14%, Decking / outdoor terrace of tropical woods (Cumari, IPE, Balsamo), self-leveling floors or s4s

VOLUME AND PRODUCTION CAPACITY

- N/A

CHANNEL

- Traders, construction industry

BUSINESS MODEL

- N/A

MAIN EXPORT DESTINATIONS

- Panama. Vietnam and China

CERTIFICATIONS

- N/A





GME IMPEX

- GME IMPEX is located in the city of Monteria, Cordoba. The company is dedicated to wood extraction.

PRODUCT PORTFOLIO

- Teca

BUSINESS MODEL

- N/A

VOLUME AND PRODUCTION CAPACITY

- N/A

MAIN EXPORT DESTINATIONS

- India and Sri Lanka

CHANNEL

- N/A

CERTIFICATIONS

- N/A



INDUGUADUA

<http://induguadua.com>



- INDUGUADUA S.A. is a company dedicated to the industrial processing of the Guadua, export of cut coarse guadua, manufacture of floors and furniture in guadua.

PRODUCT PORTFOLIO

- Cut guadua, byproducts of guadua, furniture

VOLUME AND PRODUCTION CAPACITY

- N/A

CHANNEL

- Designers and architects
- Construction companies

BUSINESS MODEL

- N/A

MAIN EXPORT DESTINATIONS

- United States and Spain

CERTIFICATIONS

- N/A



- MADECO S.A. is a company dedicated to the transformation of wood, oriented to the production of ropes for agricultural tools and construction, pallets or pallets for the packing of goods, of Interior and exterior floors, and commercial furniture, of home, office and outdoor.
- Created 22 years ago in Manizales, Caldas, Colombia, is listed as a company of high potential since its four production lines have been exported to countries in Latin America and the Caribbean.
- The company is working with wood from reforested own forests and their processes meet the ISPM 15 certification for plant protection processes, and with the ISO 9001:2008 standard.

PRODUCT PORTFOLIO

- Cabos, Pallets, Furniture, Floors

BUSINESS MODEL

- Private label

VOLUME AND PRODUCTION CAPACITY

- N/A

MAIN EXPORT DESTINATIONS

- Spain, Venezuela, Antilles, Mexico, Curazao

CHANNEL

- Distributors

CERTIFICATIONS

- NIMF 15
- ISO 9001:2008.



Cabos



Estibas



Mobiliario



Pisos



Comercial



Exteriores



Hogar



Oficina

PROCESADORAS DE MADERAS DEL CARIBE

<http://www.abarcol.com>



- Abarcol has an extensive experience in the national and international markets as exporters of wood in Colombia. They produce and export different types of Colombian wood such as Ipe, Balsamo, Teca and Jatoba of high quality in presentations of decking and floors according to the requirements of the client.

PRODUCT PORTFOLIO

- IPE, Balsamo, Teca , Jatoba

BUSINESS MODEL

- N/A

VOLUME AND PRODUCTION CAPACITY

- N/A

MAIN EXPORT DESTINATIONS

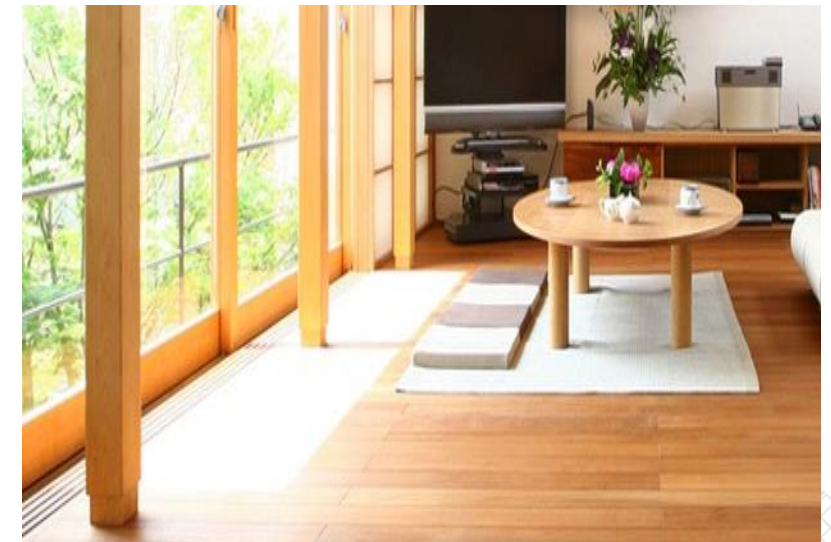
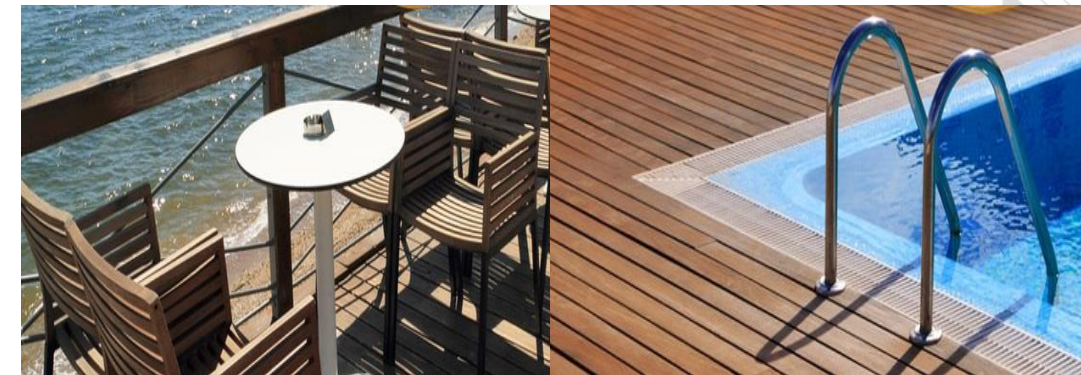
- China, Mexico, Vietnam, Taiwan

CHANNEL

- Direct sales

CERTIFICATIONS

- N/A



C.I GLOBAL MULTI COMMODITIES S.A.S

www.glomco.com.co/



GLOMCO

- GLOMCO is a leader in the commercialization and production of Colombian raw materials, at the same time that it has an extensive network of Latin American contacts and suppliers of the highest quality.

PRODUCT PORTFOLIO

- Wood, Minerals, Fruits, Vegetables, Meats

VOLUME AND PRODUCTION CAPACITY

- Tectona Teak: 10 containers per month.

CHANNEL

- Direct

BUSINESS MODEL

- To be defined

MAIN EXPORT DESTINATIONS

- N/A

CERTIFICATIONS

- N/A



PRIME CAPITAL INVEST

www.atlantistrades.com



- PRIME CAPITAL INVEST is a company dedicated to the acquisition of standing tropical timber, plantations or jungles located mainly in the departments of Antioquia, Chocó, Tolima, Córdoba and Urabá, and whose sole purpose is exclusive.

PRODUCT PORTFOLIO

- Teak, Cumaru, Balsam, IPE, Saman

VOLUME AND PRODUCTION CAPACITY

- N/A

CHANNEL

- Direct sales

BUSINESS MODEL

- N/A

MAIN EXPORT DESTINATIONS

- India

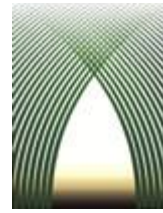
CERTIFICATIONS

- N/A



BAMBU DE COLOMBIA

www.bambudecolombia.com



- Colombia bamboo is a company with 35 years of experience, dedicated to the cultivation, treatment and processing of guadua.

PRODUCT PORTFOLIO

- Cut Guadua
- Guadua byproducts

VOLUME AND PRODUCTION CAPACITY

- N/A

CHANNEL

- Designers and architects construction

BUSINESS MODEL

- N/A

MAIN EXPORT DESTINATIONS

- United States, France

CERTIFICATIONS

- N/A



TABLERO DE ESTERILLA PRENSADA



TABLEMAC

Tablemac  Duratex

www.tablemac.com

- Tablemac is an innovative ally in solutions of wood panels with products for the construction, furnishing, setting and the refurbishing of spaces.

PRODUCT PORTFOLIO

- Particle board fiber board floored laminated floors to assemble desktop solid particle board doors

VOLUME AND PRODUCTION CAPACITY

- According to the requirements agreed in the negotiation

CHANNEL

- Retail, specialized stores and distributors

BUSINESS MODEL

- Own Brand
- Private label

MAIN EXPORT DESTINATIONS

- Panama and Dominican Republic

CERTIFICATIONS

- N/A





FURNITURE – HOME, OFFICE, AND DESIGN



PROCOLOMBIA
EXPORTACIONES TURISMO INVERSIÓN MARCA PAÍS

KASSANI

www.kassani.com

Kassani®

- Kassani specializes according to market trends in the three business segments: responsible trade, for corporate buildings, Singular experience, as a solution to the sector HORECA and learning teacher, for the education sector. The latter has been of special importance to the company; the Kassani opted him to design new products as a reaction to the needs of the market, without forgetting the own brand innovation. Likewise, thanks to our classroom publication 360 °, we differentiate ourselves by generating a research area that collects the most important current classroom practices.

PRODUCT PORTFOLIO

- Chairs (auditoriums, rotating, interlocutors, education), tables, files, libraries, work stations, desk accessories

VOLUME AND PRODUCTION CAPACITY

- N/A

CHANNEL

- HORECA sector, retail, public purchases, department stores, schools and schools.

BUSINESS MODEL

- N/A

MAIN EXPORT DESTINATIONS

- Ecuador, Panama, Venezuela

CERTIFICATIONS

- SGS 9001 / 2008; PISA (Comprehensive prevention of environmental health)



DISEÑO Y MUEBLES

www.disenosymuebles.com



- DISEÑO Y MUEBLES is one of the main factories of upholstery and the first in wooden furniture in the city of Barranquilla.
- Manufacture, commercialization and export of metal furniture, upholstery and wood in general, providing the wood drying service, manufacture and sale of pallets, import of raw materials, machinery and equipment in general.

PRODUCT PORTFOLIO

- Dining rooms, alcoves, sofas, modular, armchairs, chairs

VOLUME AND PRODUCTION CAPACITY

- N/A

CHANNEL

- N/A

BUSINESS MODEL

- B2B

MAIN EXPORT DESTINATIONS

- Aruba and United States

CERTIFICATIONS

- ISO9001



ZIENTTE

www.imafurniture.com

zientte

- Grupo Zientte was established in 1985 and since then they have produced and commercialized their own collections. They have participated in the furnishing of a great variety of projects such as hotels, restaurants, shopping centers, hospitals and corporate offices throughout its existence. The company is currently a family of more than 150 people that makes it possible to be a leading brand in the furniture sector. They have the line Zientte, line for youth segment, and lower price: Bombox.

PRODUCT PORTFOLIO

- Sofas, beds, armchairs, dining rooms, tables.

VOLUME AND PRODUCTION CAPACITY

- Validated according to the project

CHANNEL

- Architects, builders, designers, distributors, hotels

BUSINESS MODEL

- N/A

MAIN EXPORT DESTINATIONS

- Venezuela, Canada, Ecuador, United States, Peru

CERTIFICATIONS

- N/A



INTERDOORS

www.interdoors.com.co



- Company that has a production plant, specialized in the manufacture, commercialization and installation of doors and furniture for works.
- The company is dedicated to the production of agglomerated products such as wood, furniture. They take care of the construction sector.
- INTERDOORS S.A.S. offers products with designs that are at the forefront of the market, always seeking the best quality in their products, services and support to customers in each of their projects.

PRODUCT PORTFOLIO

- Doors, kitchen, closet, bathrooms

VOLUME AND PRODUCTION CAPACITY

- N/A

CHANNEL

- Builders, real estate, chain stores and distributors

BUSINESS MODEL

- Direct sales

MAIN EXPORT DESTINATIONS

- N/A

CERTIFICATIONS

- N/A



MUEBLES Y ACCESORIOS

muebles &
accesorios

www.mueblesyaccesorios.com.co

- MUEBLES Y ACCESORIOS has the highest quality standards, supported by the latest technology and a work team, formed exclusively for the development of furniture products, which respond to the needs of its customers; providing elegance, comfort and versatility, when creating a space.

PRODUCT PORTFOLIO

- Bedrooms, rooms, dining rooms, accessories, sofas, chairs

VOLUME AND PRODUCTION CAPACITY

- N/A

CHANNEL

- Builders, retail, public purchases, chain stores

BUSINESS MODEL

- N/A

MAIN EXPORT DESTINATIONS

- N/A

CERTIFICATIONS

- N/A



ATTICA DESIGN GROUP

www.atticadesign.com



- It is an international company specializing in the development of exhibition, interior and architectural design projects aimed at the sector corporate, hospitality, retail, institutional and residential. Attica Design Group has gained great recognition in the market thanks to its team of professionals who work in the implementation of quality projects, in fair weather and economic viability to achieve results that make a difference.

PRODUCT PORTFOLIO

- Interior and architectural design.
- Commercial furniture

VOLUME AND PRODUCTION CAPACITY

- Validated according to the project

CHANNEL

- Developers and project specifiers, architects

BUSINESS MODEL

- N/A

MAIN EXPORT DESTINATIONS

- Panama and United States

CERTIFICATIONS

- N/A



MADERKIT

www.maderkit.com.co



- Maderkit S.A. is a Colombian company located 8 km from the city of Cali, in Valle del Cauca. It is dedicated to the manufacture and marketing of furniture for home and office kit (Ready to Assemble). These furniture are equipped with the highest standards of quality, durable and environmentally friendly materials with the environment, designs practical and easy-to-assemble, quality and constant innovation.

PRODUCT PORTFOLIO

- Furniture bedroom furniture Studio, entertainment furniture, furniture kitchen, side tables, folding doors, line VOSS

VOLUME AND PRODUCTION CAPACITY

- To be arranged according to the customer's needs

CHANNEL

- Distributor with capacity to self-service channels, supermarket stores

BUSINESS MODEL

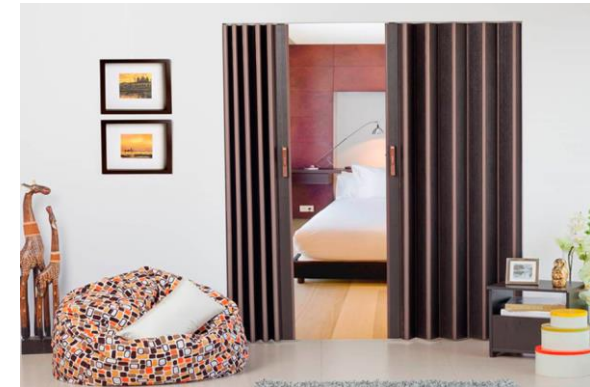
- To be agreed upon

MAIN EXPORT DESTINATIONS

- Bolivia, Chile and Panama

CERTIFICATIONS

- BASC, ISO9001



METALCÓN SA

www.metalesyconceptos.com



- Company dedicated to the manufacture and marketing of furniture, offering a comprehensive offer according to the needs of the sectors: institutional, educational, hotel, restaurants and home.

PRODUCT PORTFOLIO

- Manufacturer of metal furniture for the office, pool furniture.

VOLUME AND PRODUCTION CAPACITY

- N/A

CHANNEL

- Importers and distributors office equipment
- Specialized chains

BUSINESS MODEL

- Development of furniture and metal equipment for the office

MAIN EXPORT DESTINATIONS

- Guatemala, Jamaica, Ecuador

CERTIFICATIONS

- N/A



- Our product States standards which not only reflect a need to satisfy our customers, but provide sensations and experiences that remain indelible in life. We design and produce kitchens, bathrooms, closets and all a complete program of home furnishings. A home where minimalism and functionality go hand in hand. With a chromatic range very carefully and with warm, pleasant, materials that are integrated with the rest of the furniture of the House.

PRODUCT PORTFOLIO

- Furniture for kitchens and bathrooms

VOLUME AND PRODUCTION CAPACITY

- It is validated according to project.

CHANNEL

- Construction companies, architects

BUSINESS MODEL

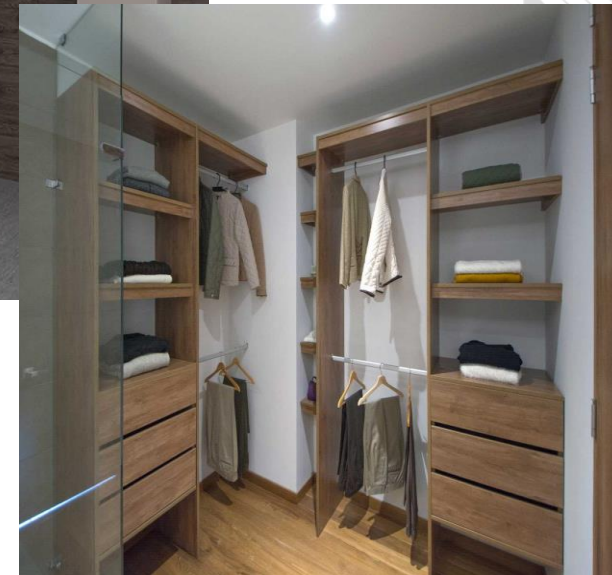
- N/A

MAIN EXPORT DESTINATIONS

- United States

CERTIFICATIONS

- N/A



MODUART

www.moduart.com



- "Moduart is a Colombian organization founded in 1983, we are a marketing company for the furniture and construction industry, giving rise to the ready-to-assemble furniture brand Moduart® with a presence in 11 countries in Latin America. located 15 km south of the city of Barranquilla, Colombia, access to the ports of Cartagena, Barranquilla and Santa Marta, monthly capacity of 70,000 RTA furniture, 500 kitchens and 2,800 bathroom furniture and 5000 doors. "

PRODUCT PORTFOLIO

- Furniture

BUSINESS MODEL

- N/A

VOLUME AND PRODUCTION CAPACITY

- N/A

MAIN EXPORT DESTINATIONS

- Ecuador and United States

CHANNEL

- N/A

CERTIFICATIONS

- N/A



INCAMETAL

www.hogaruniversal.com



- Company dedicated to the manufacturing and commercialization of items for the kitchen and for the presentation of food.
- INCAMETAL is a brand of the company LANDERS Y CIA dedicated to providing consumer welfare through creative solutions for preparation, cooking, food consumption and comfort in the home.

PRODUCT PORTFOLIO

- Cutlery, napkin rings, coasters, salt, sugar, butter, cheese, saucers, trays, files, machetes, machetilla, rula, bambas, sabers, pacoras, sickles, leaf cutters, scythes, spatulas, hinges, screws, agricultural line

VOLUME AND PRODUCTION CAPACITY

- As required by the customer

CHANNEL

- Big surfaces, online store, universal home stores, authorized service centers, international marketers

BUSINESS MODEL

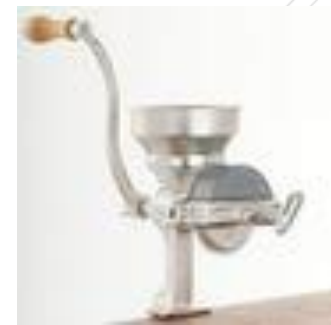
- Own Brand

MAIN EXPORT DESTINATIONS

- Mexico, Ecuador, Guatemala, El Salvador

CERTIFICATIONS

- N/A



TU TALLER DESIGN

www.tutaller.com.co



- Producer and marketer of facades claddings, skies, standard architectural furniture pergolas, tables, chairs, storage, lighting, co-creation spaces, meeting rooms, products for use and work, decoration, reception, kitchens, lamps, screens, supports, exhibitors, ornamental elements.

PRODUCT PORTFOLIO

- Supports, exhibitors, chairs, gardening elements, ornamental elements, closet, beds, rooms, libraries

VOLUME AND PRODUCTION CAPACITY

- To be agreed upon

CHANNEL

- Distributor

BUSINESS MODEL

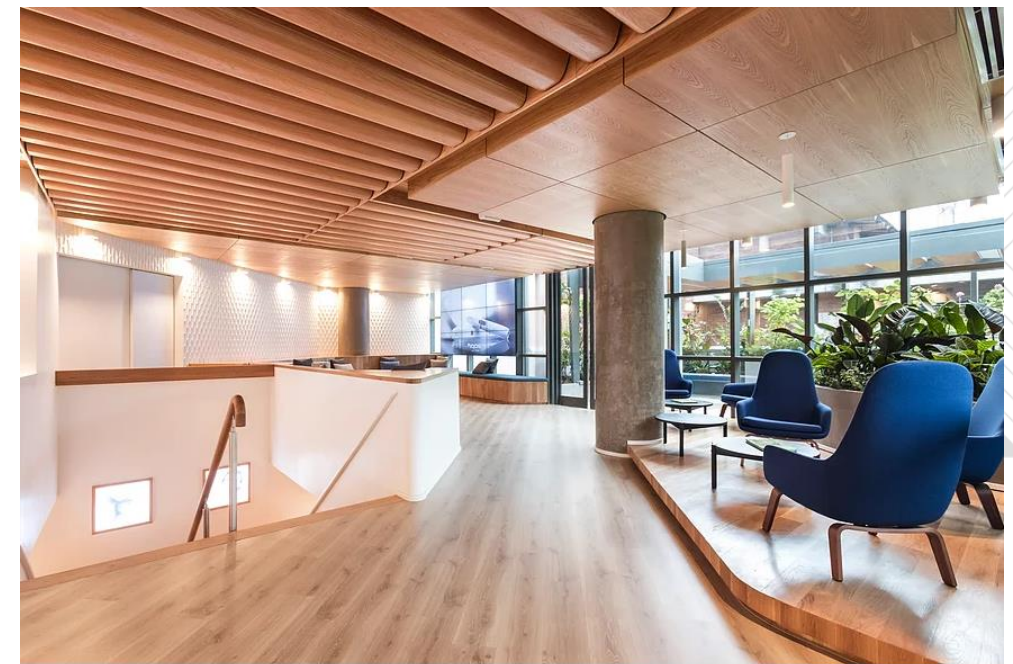
- B2B

MAIN EXPORT DESTINATIONS

- United States, Mexico and Ecuador

CERTIFICATIONS

- N/A



FORMAS MODULARES

<http://www.formasmodulares.com>



- Company dedicated to the production, marketing and installation of agglomerates with different finishings, combining design and innovation with technology

PRODUCT PORTFOLIO

- Home furniture: Kitchens, bathrooms, wardrobes, doors, entertainment centers, home office, libraries, Special furniture
- Institutional and commercial furniture: offices, hotels, restaurants, clinics, auditoriums.

VOLUME AND PRODUCTION CAPACITY

- N/A

CHANNEL

- Direct

BUSINESS MODEL

- Producers and marketers.

MAIN EXPORT DESTINATIONS

- Guatemala, United States

CERTIFICATIONS

- N/A



MADEMECO

<http://www.mademeco.com>



- MADEMECO offers a wide selection of colors, finishes and variety of wooden interior doors or primed at highly competitive prices

PRODUCT PORTFOLIO

- Sky, Bar, Modern, Luxor and locks

VOLUME AND PRODUCTION CAPACITY

- 100,000 doors per month

CHANNEL

- Builders, wholesale distributors, importers, construction specifiers

BUSINESS MODEL

- B2C

MAIN EXPORT DESTINATIONS

- United States, Panama and Costa Rica

CERTIFICATIONS

- N/A



ALMA ATELIER

www.alma-atelier.com



Lo importante es lo que se integra

- It is an interior design that develops spaces for architectural projects, produced with materials and innovative elements, such as walls in serial planes, panels with lighting, blinds in different finishes and textures of your own industry. We differentiate ourselves by developing exclusive furniture with the integration of craft materials.



PRODUCT PORTFOLIO

- Chairs, tables, mirrors, lamps

BUSINESS MODEL

- N/A

VOLUME AND PRODUCTION CAPACITY

- Validated according to the project

MAIN EXPORT DESTINATIONS

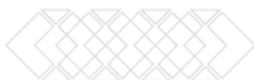
- United States and Panama

CHANNEL

- Hotelero, constructores, diseñadores.

CERTIFICATIONS

- N/A



MULTIPROYECTOS SA

<http://www.multiproyectos.com.co>



- We are a company with over 38 years of experience in the design and manufacture of products and services focused on the integrated workspace adequacy. Design, manufacture, sale, installation, renewal of products and services for solutions of furnishing of offices and work environments, manufactured with the best materials.

PRODUCT PORTFOLIO

- Office furniture

BUSINESS MODEL

- N/A

VOLUME AND PRODUCTION CAPACITY

- N/A

MAIN EXPORT DESTINATIONS

- Panama, Estados Unidos y Puerto Rico

CHANNEL

- Hotels, construction companies and projects

CERTIFICATIONS

- N/A



RTA DESIGN

www.rta.com.co



- RTA's idea is to offer products with a perfect combination of competitive prices, excellent quality and functional and innovative designs. We are a company that has the experience and support of other important companies in the sector.
- The modular furniture RTA Muebles, meets international quality standards due to the use of state-of-the-art technology and the elaboration of the best boards of cultivated wood, finely crushed and pressed. The detailed information of our products and the delicate selection of fittings and accessories that we use in our furniture.

PRODUCT PORTFOLIO

- Cabinets, Closets, and Furniture For Libraries

VOLUME AND PRODUCTION CAPACITY

- According to the requirements agreed in the negotiation

CHANNEL

- Own stores, distributor, retail

BUSINESS MODEL

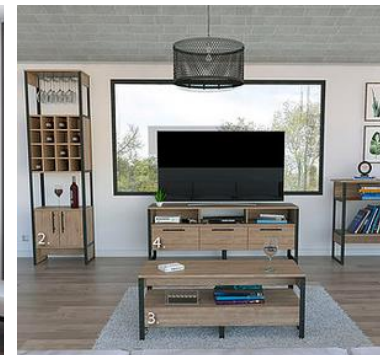
- Maquila - Private label

MAIN EXPORT DESTINATIONS

- Chile, Mexico and El Salvador

CERTIFICATIONS

- BASC



INDUSTRIA DE MUEBLES DEL VALLE - INVAL

<http://inval.com.co/col/>

inval
El mueble que uno quiere

- INVAL S.A is a company specializing in the manufacture and marketing of ready-to-assemble modular furniture that contributes to improving the quality of life of users, with furniture that provides functional and practical solutions to homes and offices.
- The furniture has a wide variety of designs, materials, colors, sizes and sizes that optimize the spaces.
- INVAL has a wide export experience recognized internationally, and with high standards of quality, innovation and technology.

PRODUCT PORTFOLIO

- Furniture for bedroom, bathroom, study, living room and study.

VOLUME AND PRODUCTION CAPACITY

- 55,000 pieces of furniture per Month

CHANNEL

- Large Surfaces, Distributors, Wholesalers and Retailers, Specialized in Office and Hardware, Direct Sale - Institutional, Construction, Internet Sale .COM

BUSINESS MODEL

- Production and marketing with Marca INVAL
- Private label

MAIN EXPORT DESTINATIONS

- United States, Chile, Ecuador, Bolivia, Panama, Guatemala.

CERTIFICATIONS

- ISO 9001: 2015 granted by Colombian Institute of Technical Standards and Certification and IQNET, CARB 2 for the sheet: applies for USA.



ESPECIMADERAS

www.especimaderas.com/



- The company has its production plant in Bogota, Colombia and employs 30 people for the design and manufacture of joinery made to measure and 10 people in the administrative and commercial area. ESPECIMADERAS works with Italian wood and all their labor is handmade, taking care of every detail of the project with care and making each of their unique and different products to each of its customers.

PRODUCT PORTFOLIO

- Furniture

BUSINESS MODEL

- N/A

VOLUME AND PRODUCTION CAPACITY

- Validated according to the project

MAIN EXPORT DESTINATIONS

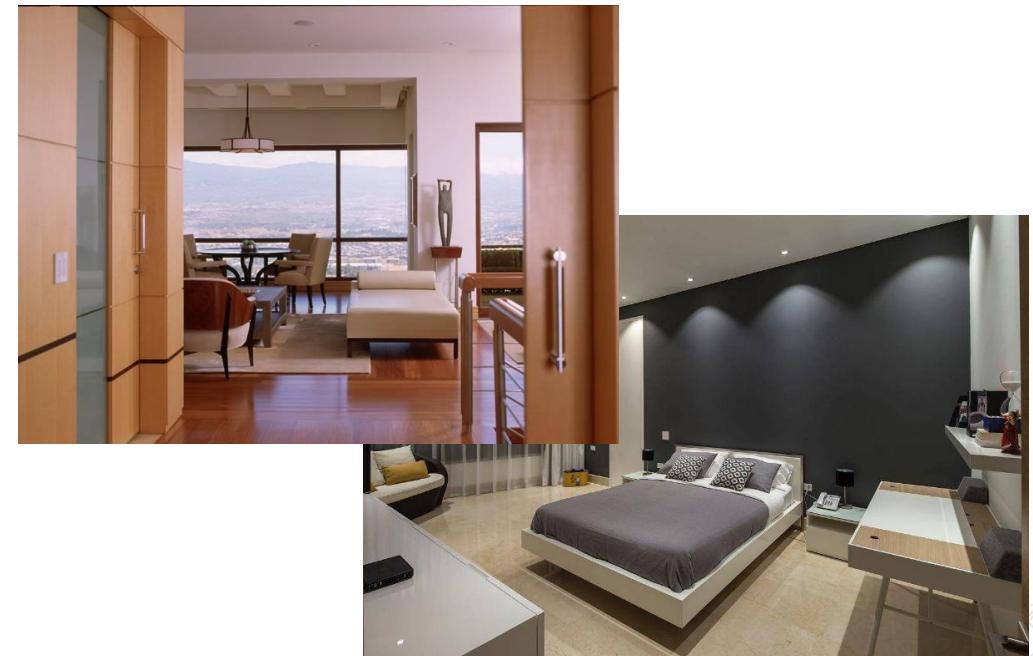
- United States

CHANNEL

- Construction companies, architects

CERTIFICATIONS

- N/A



DECORMADERAS INTERNATIONAL

<http://www.decormaderas.com/>



- Company dedicated to the manufacture and commercialization of products in high quality wood, with a modern, dynamic and tailored design, taking into account the needs of its customers This company manages a portfolio of services that includes Closets, Kitchens, Bathroom Furniture, Doors, and Entertainment Centers

PRODUCT PORTFOLIO

- Closets, kitchens and bathroom furniture, doors and entertainment centers.

VOLUME AND PRODUCTION CAPACITY

- N/A

CHANNEL

- Direct sales

BUSINESS MODEL

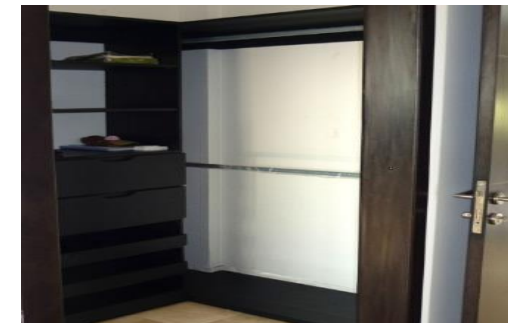
- N/A

MAIN EXPORT DESTINATIONS

- Aruba

CERTIFICATIONS

- N/A



MUEBLES IANNINI Y CIA

www.mueblesiannini.com



- IANNINI furniture is a family business based in Bogota, with 38 years of experience in the market of decoration, design and production of furniture.

PRODUCT PORTFOLIO

- Furniture for the home, special designs, decorative accessories, institutional furniture.

VOLUME AND PRODUCTION CAPACITY

- N/A

CHANNEL

- Construction, retail, public procurement, large surfaces

BUSINESS MODEL

- N/A

MAIN EXPORT DESTINATIONS

- Panama and United States

CERTIFICATIONS

- N/A



MUEBLES JAMAR

www.jamar.com

- Company dedicated to the production of wood of different species counting with the most high-tech German and American cuts, dried and moulded end products.



PRODUCT PORTFOLIO

- Alcoves, rooms, dinning room, mattresses

VOLUME AND PRODUCTION CAPACITY

- N/A

CHANNEL

- Retail, importers, builders

BUSINESS MODEL

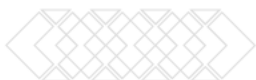
- N/A

MAIN EXPORT DESTINATIONS

- Panama

CERTIFICATIONS

- ISO9001



FAMOC DE PANEL



- Colombian company that specializes in the design, production and the furnishing of offices and corporate spaces. With 45 years of experience, we are leaders in the market of furniture for offices in Latin America, we have showrooms, offices and own production sites in Colombia, Chile and Venezuela

PRODUCT PORTFOLIO

- Chairs, furniture for offices

BUSINESS MODEL

- N/A

VOLUME AND PRODUCTION CAPACITY

- N/A

MAIN EXPORT DESTINATIONS

- Puerto Rico, Costa Rica, Guatemala

CHANNEL

- Construction companies, architects

CERTIFICATIONS

- N/A



INDUSTRIAS DOFI SAS

www.moduofi.com



- Industrias Dofi SAS, is a company that imports its raw materials, for the production, marketing and export of modular furniture in particleboard.

PRODUCT PORTFOLIO

- Wooden furniture ready to assemble, made of agglomerated wood, with their respective parts and fittings

VOLUME AND PRODUCTION CAPACITY

- N/A

CHANNEL

- N/A

BUSINESS MODEL

- N/A

MAIN EXPORT DESTINATIONS

- Dominican Republic and Panama

CERTIFICATIONS

- N/A



MONICA URQUIJO

www.monicaurquijo.com



- Company that is dedicated to the production and design of textile pieces. handmade with banana fiber and other natural fibers.



PRODUCT PORTFOLIO

- Furniture and chairs, Curtains, Rugs, Lamps, Bars and bife

VOLUME AND PRODUCTION CAPACITY

- N/A

CHANNEL

- B2C
- Luxury Stores

BUSINESS MODEL

- N/A

MAIN EXPORT DESTINATIONS

- United States

CERTIFICATIONS

- N/A



IMA INDUSTRIA DE ARTICULOS DE MADERA

www.imafurniture.com



- More than 50 years exporting to major factories of furniture in the United States. Suppliers of furniture for hotels and restaurants appearing among our customers the major hotel chains at national and international level. Manufacturers of carpentry of wood fixed and semi-fixed for the hotel industry and construction machinery computerized with the latest technology.

PRODUCT PORTFOLIO

- Chairs, cabinets, beds, tables, commodes, libraries

VOLUME AND PRODUCTION CAPACITY

- It is validated according to project.

CHANNEL

- Architects, builders, designers, distributors, hotels

BUSINESS MODEL

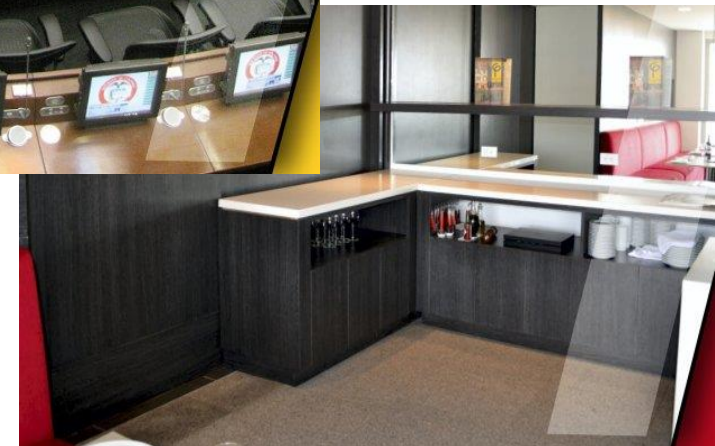
- N/A

MAIN EXPORT DESTINATIONS

- United States, Panama, Canada

CERTIFICATIONS

- N/A



- Family business that was founded in 1983 in order to manufacture and market furniture for office and home. It is an international organization that provides integral furniture solutions to its clients, focused on the development and quality of its products and services

PRODUCT PORTFOLIO

- Chairs, furniture, divisions of spaces, call center, storage, shelves.

VOLUME AND PRODUCTION CAPACITY

- To be agreed according to the needs of the client

CHANNEL

- Distributor with ability to reach Self-service channels, supermarkets stores

BUSINESS MODEL

- To be agreed upon

MAIN EXPORT DESTINATIONS

- Venezuela, Guatemala, Panamá, Costa Rica y Ecuador

CERTIFICATIONS

- ISO9001:2006



SOLINOFF CORPORATION

SOLINOFF
DISEÑOS SENSIBLES. ESPACIOS INTELIGENTES

www.solinoff.com

- In the course of the years we have become one of the leading companies in the sector of furniture and solutions. Since then we have continued innovating in our products and services, developing projects, understanding the customer's needs and creating living spaces.

PRODUCT PORTFOLIO

- Chairs, storage, floors, carpets, interior, real estate architecture

VOLUME AND PRODUCTION CAPACITY

- N/A

CHANNEL

- Construction companies, architects

BUSINESS MODEL

- N/A

MAIN EXPORT DESTINATIONS

- Venezuela, Costa Rica, Netherlands Antilles, Peru

CERTIFICATIONS

- N/A



- The company is the most representative of the sector in the country, has over 1700 employees in the country, with 117 points of sale nationwide. The production of lines selected in the internationalization are dining rooms and bedrooms, reaching 500 units month for export, using 60% of production and covering domestic market.

PRODUCT PORTFOLIO

- Home appliances, technology, woods, mattresses

VOLUME AND PRODUCTION CAPACITY

- N/A

CHANNEL

- Large surfaces and distributors

BUSINESS MODEL

- N/A

MAIN EXPORT DESTINATIONS

- Chile and United States

CERTIFICATIONS

- ISO9001



JIMECO SA

www.jimeco.com



- We are proud to be at the forefront of innovation in custom crafts, always creating new finishes, combinations and designs. Reinvention and innovation is an ethos that we pursue diligently. In this search, we always try to convey the best traits that were found in the immense diversity of the 16 countries in which we have presence.

PRODUCT PORTFOLIO

- Tables, chairs, finishes

VOLUME AND PRODUCTION CAPACITY

- It is validated according to project

CHANNEL

- Architects, builders, designers, hotels

BUSINESS MODEL

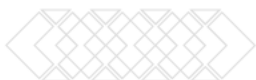
- N/A

MAIN EXPORT DESTINATIONS

- United States and France

CERTIFICATIONS

- N/A



TRIPLEX ACEMAR

www.acementar.co



- Furniture and timber producer, focused on going to the forefront of market trends and adapt to your needs, guaranteeing the highest quality of its products.
- Lines: Natura focused on natural wood, laminate flooring and decks; the line Domus of ceilings and walls for auditoriums and cabinets wood, supreme line of doors and wood (with special features and acoustic doors); and finally the line FlexDesign develops design in wood to the measure and furniture accessories from easy Assembly (RTA).

PRODUCT PORTFOLIO

- Natural wood, laminate flooring and decks. Walls for auditoriums and cabinets wood

VOLUME AND PRODUCTION CAPACITY

- N/A

CHANNEL

- N/A

BUSINESS MODEL

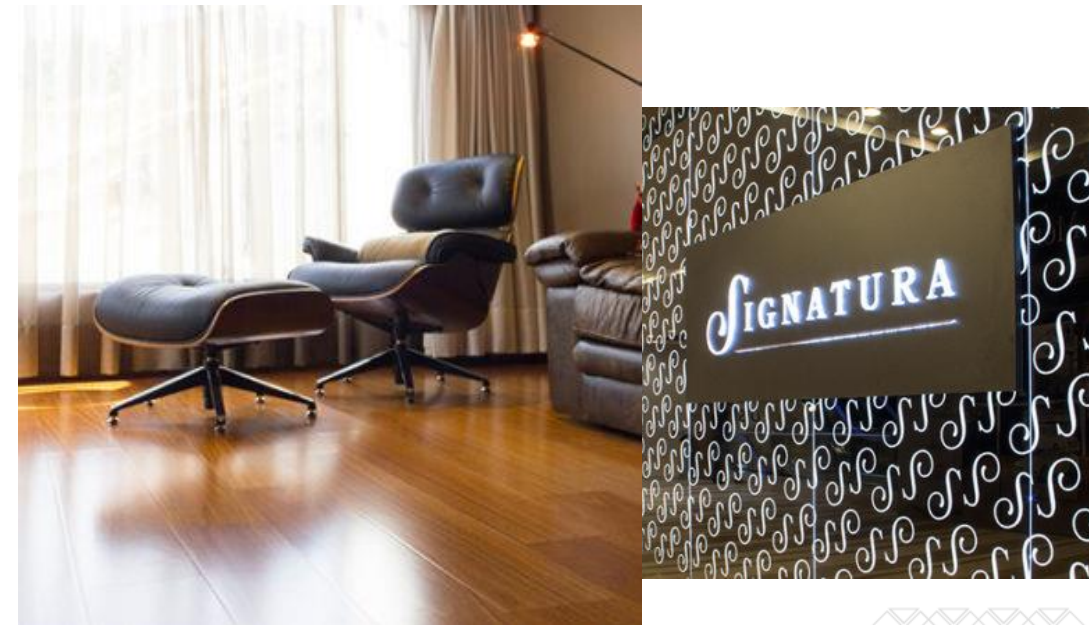
- N/A

MAIN EXPORT DESTINATIONS

- Peru, Panama, United States, Guatemala

CERTIFICATIONS

- FSC 2018, CRADLE TO CRADLE, ISO 9001, ISO 14001



GRUPO MONARCA

www.grupo-monarca.com



- Company dedicated to the development of urban and construction projects, from macro-projects of centrality and partial plans, to individual developments. In both cases provide services integrating them and real estate including design, promotion, construction, sales and management in the fields of trade, buildings, homes, subdivisions, institutional settings, parks, infrastructure and roads.
- The company is dedicated to producing products in solid wood doors, floors and panels.

PRODUCT PORTFOLIO

- Embossed boards, floors, doors, stairs, prefabricated houses, furniture

BUSINESS MODEL

- Direct sales

VOLUME AND PRODUCTION CAPACITY

- N/A

MAIN EXPORT DESTINATIONS

- N/A

CHANNEL

- Government, institutional and construction projects

CERTIFICATIONS

- N/A



INORCA – INDUSTRIAS NORTECAUCANAS

<http://www.inorca.com.co>



- Inorca es una empresa líder a nivel nacional que diseña y fabrica mobiliario. Ha logrado posicionarse como proveedor en el mercado externo, haciendo presencia en 4 continentes.
- Calidad, confiabilidad, eficiencia y servicio. Estos son los atributos especiales que se asumen como cualidades inherentes en el producto de Inorca.

PRODUCT PORTFOLIO

- Institutional furniture, chairs and auto parts, furniture for the health sector and chairs for cinemas and auditoriums.

VOLUME AND PRODUCTION CAPACITY

- Kyra chair: 18,000 chairs per month, with a cycle of 25 units per hour.

CHANNEL

- Direct and distributors

BUSINESS MODEL

- Cinemas, worship center, educational centers and collectives.

MAIN EXPORT DESTINATIONS

- Brazil, Canada, Costa Rica, Ecuador, United States, Guatemala, Mexico, United Kingdom.

CERTIFICATIONS

- ISO 9001:2008
- ISO 9001:2015



Smart solutions for the comfort of your audience!

MEPAL

www.mepal.com.co

mepal

- Company with over 50 years of experience and the backing of the Carvajal organization, offers comprehensive solutions for furnishing and architectural spaces.

PRODUCT PORTFOLIO

- Furniture: storage, education, chairs, meeting area, individual work, social area area

VOLUME AND PRODUCTION CAPACITY

- To be arranged according to the customer's needs

CHANNEL

- Distributor with capacity to self-service channels, supermarket stores

BUSINESS MODEL

- To be agreed

MAIN EXPORT DESTINATIONS

- Venezuela, Guatemala, Panama, Ecuador, Peru

CERTIFICATIONS

- N/A



SERIES



<https://seriesseating.com/>

- With over 35 years of experience, Series Seating has been a global industry leader in design, manufacture and installation of ergonomic seating. We cover dynamic ergonomic designs that facilitate the "active seat" to increase the circulation of the blood, at the time that reduce the tension of the back, the stiffness of the joints and muscle fatigue, even after sitting for long periods time.

PRODUCT PORTFOLIO

- Chairs and furniture for halls, waiting rooms, offices, food, sports arenas

VOLUME AND PRODUCTION CAPACITY

- To be validated according to the project

CHANNEL

- N/A

BUSINESS MODEL

- N/A

MAIN EXPORT DESTINATIONS

- Chile, Australia, United States

CERTIFICATIONS

- N/A



- Dotal S.A.S. is an international company with 30 years of experience in the world of Retail. It is a company specialized in the design, manufacture and installation of furniture for commercial areas. They have a production space of 3,000 m² where prevail the best materials and workmanship.

PRODUCT PORTFOLIO

- Systems display, architectural panels.

VOLUME AND PRODUCTION CAPACITY

- To be arranged according to the customer's needs

CHANNEL

- Distributor with capacity to self-service channels, supermarket stores

BUSINESS MODEL

- N/A

MAIN EXPORT DESTINATIONS

- Ecuador, Peru, Mexico, Panama, Cuba, Republica Dominicana, Bolivia, Costa Rica, Trinidad and Tobago, Venezuela, Spain

CERTIFICATIONS

- N/A



DAMIS

www.parasolestropicales.com



- The company was born on April 1 and arrives in Colombia to develop a new concept of roller blind. With 35 years of experience in the market of solar protection and interior decoration, it has won many awards including the National Program of Industrial Design.

PRODUCT PORTFOLIO

- Enclosures, Coverings, Furniture. Eg: kiosks, awnings, membranes, umbrellas, domotek, accessories, furniture.

VOLUME AND PRODUCTION CAPACITY

- To be agreed according to the needs of the client

CHANNEL

- Distributor with ability to reach Self-service channels, supermarkets stores

BUSINESS MODEL

- To be agreed upon

MAIN EXPORT DESTINATIONS

- United States, Argentina, Chile, Mexico, Guatemala, Panama, Aruba, France

CERTIFICATIONS

- ISO9001:2008, ISO14001:2004



PLÁSTICOS RIMAX



www.rimax.com.co

- Plásticos Rimax S.A.S. is a company committed to the processing and marketing of plastic. It is one of the largest Latin American companies that develops a wide range of decorative plastic products, both for home and for trade in general. Its plant is located in Cali - Colombia and exported to countries of America, Europe and Asia.

PRODUCT PORTFOLIO

- Furniture, Cabinets, Home, Pets, Gardening, Children, Institutional, Hardware and Kitchen

VOLUME AND PRODUCTION CAPACITY

- To be agreed according to the customer's needs

CHANNEL

- Distributor with capacity to reach self-service channels, supermarkets and stores

BUSINESS MODEL

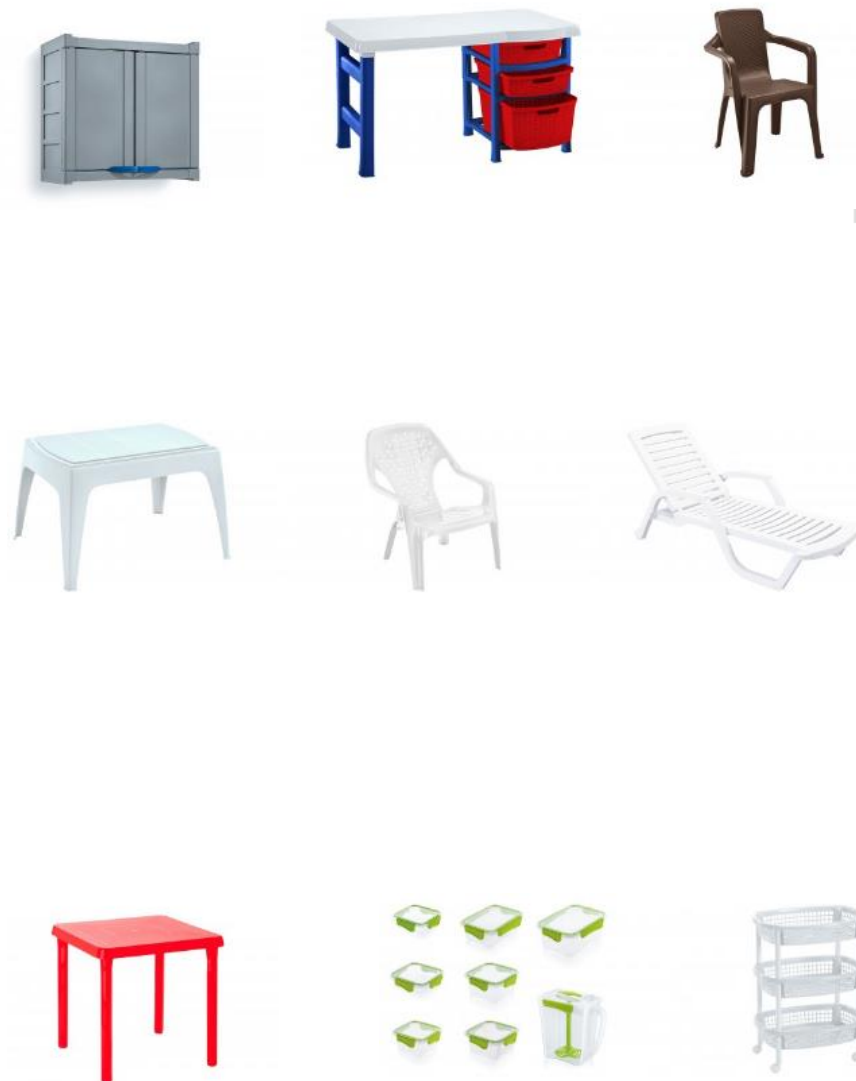
- To be agreed upon

MAIN EXPORT DESTINATIONS

- America, Europe and Asia

CERTIFICATIONS

- N/A



AMERICANA DE COLCHONES

<http://americanadecolchones.com>



- Americana de Colchones is a Colombian company that creates economic development opportunities to more than 5000 people, directly and indirectly, a leader in the manufacture and commercialization of products for health, rest and comfort, and mattresses contributing to improve the quality of life of their employees and families, customers and suppliers, the local community, society at large and the environment, thus being a company committed to Social responsibility.

PRODUCT PORTFOLIO

- Massage chairs, sofa bed, bed bases, adjustable bases, mattresses

BUSINESS MODEL

- N/A

VOLUME AND PRODUCTION CAPACITY

- N/A

MAIN EXPORT DESTINATIONS

- Caribbean, Central America.

CHANNEL

- Hospitality
- Distributors
- Franchises

CERTIFICATIONS

- Colombian Institute of Technical Standards and Certification ISO 9001
- The inputs used in American are certified by providers



MANUFACTURAS DAC

www.cubacol.com



- Colombian company dedicated to the manufacture of barrels of oak, with the commitment and love for their work, has provided its clients products of the highest quality.
- The experience of more than 44 years and the amount of satisfied customers every day benefiting from our products, attest to the seriousness of our work which is carried out with the collaboration of a large trained human talent and the necessary infrastructure.

PRODUCT PORTFOLIO

- Barrels, tubs, coolers, among others, special for the aging dark drinks and alcohol for the preparation of rum.

VOLUME AND PRODUCTION CAPACITY

- N/A

CHANNEL

- Distribution

BUSINESS MODEL

- Colombian Brand

MAIN EXPORT DESTINATIONS

- United States, United Kingdom, Slovakia

CERTIFICATIONS

- N/A



Vertical sin soporte

BAR ref. 220



Pánel giratorio o compartimientos internos.

BAR MIXTO ref 220



Pánel interno giratorio



Internamente el barril se divide en dos: la parte superior contiene compartimientos internos y la parte inferior lleva un pánel giratorio.



KONFORT

<http://konfort.com.co/>



- Our brand Konfort is characterized by a comprehensive brand, which seeks to deliver to its customers, solutions of design and adaptation of your space. Our business lines interact dynamically to give you innovative and technological alternatives that enable you to enjoy a comfortable, beautiful, and unique.

PRODUCT PORTFOLIO

- Carpets, Rugs, furniture and carpentry

VOLUME AND PRODUCTION CAPACITY

- We specialize in the manufacture of carpet for lobbies, lounges, halls, theatres or any other area of large scale who want carpeting, we are able to manufacture from 300 m2 onwards.

CHANNEL

- Construction, retail, public procurement, large surfaces.

BUSINESS MODEL

- N/A

MAIN EXPORT DESTINATIONS

- Panama and Venezuela

CERTIFICATIONS

- N/A



COLCHONES EL DORADO

<https://tienda.colchoneseldorado.com>



- Producer of mattresses (different lines). Linen and pillows for home, hotels.



PRODUCT PORTFOLIO

- Mattresses, mattress base with base and headboard, bedding, linen, pillows, tables fuff, night, beds, adjustable beds.

VOLUME AND PRODUCTION CAPACITY

- N/A

CHANNEL

- Retail, public procurement, large surfaces, hotels; Horeca

BUSINESS MODEL

- N/A

MAIN EXPORT DESTINATIONS

- Caribbean and Central America

CERTIFICATIONS

- N/A



HJA DESIGN SA

www.hjasa.com



- Company dedicated to the transformation and commercialization of steel as a basic input for the metal-mechanic industry, both nationally and internationally, seeking with our experience to satisfy the needs of the market by transforming steel into solutions.

PRODUCT PORTFOLIO

- Beds Wardrobes Nightshades and Drawers

VOLUME AND PRODUCTION CAPACITY

- According to the requirements agreed in the negotiation

CHANNEL

- Distributor

BUSINESS MODEL

- Own Brand
- Private Label

MAIN EXPORT DESTINATIONS

- United States and El Salvador

CERTIFICATIONS

- N/A



LINEAS Y DISEÑOS

www.lineasydiseños.com.co



- This company was created in order to sell furniture for office, school, cafeteria and related; wanting customers to feel them as part of your company to be the comprehensive solution to your needs, with humane treatment and service. Its differentiating factors are the human factor, innovation and service to the customer, response times and maintenance portfolio.

PRODUCT PORTFOLIO

- Divisions
- Business furniture
- Chairs

VOLUME AND PRODUCTION CAPACITY

- According to the requirements agreed upon in the negotiation

CHANNEL

- Distributor, own stores, retail

BUSINESS MODEL

- Own Brand
- Private label

MAIN EXPORT DESTINATIONS

- Venezuela
- Ecuador

CERTIFICATIONS

- ISO 9001:2008



METALMUEBLES

www.metalmuebles.com.co



- Metalmuebles was established in order to innovate and manufacture leading-edge products with high technology, raw material of the best quality and affordable prices to our customers.
- Has a qualified staff in each of the areas of the company allowing them to be agile, versatile and timely in our attention to deliver products of excellent quality, with designs according to each need, thus providing a high level of satisfaction and service.

PRODUCT PORTFOLIO

- Auditorium Chairs Modular
- Divisions Office Furniture
- Aluminum Furniture

VOLUME AND PRODUCTION CAPACITY

- According to the requirements agreed upon in the negotiation

CHANNEL

- Distributor, own stores, retail

BUSINESS MODEL

- Own Brand
- Private label

MAIN EXPORT DESTINATIONS

- Ecuador

CERTIFICATIONS

- N/A



MUEBLE IDEAS

www.muebleideas.com



- Company specialized in architectural carpentry with 28 years of experience in the design, manufacturing and installation and export of furniture for commercial, financial, hotel, residential, institutional and industrial buildings.
- They are leaders in wood finishes with wide recognition in the development of projects for national and international representative companies.

PRODUCT PORTFOLIO

- Malls, financial spaces, hotel spaces, residential spaces, institutional spaces, recreational spaces, health spaces

VOLUME AND PRODUCTION CAPACITY

- According to the requirements agreed upon in the negotiation

CHANNEL

- Distributor, own shops, retail

BUSINESS MODEL

- Own Brand
- Private label

MAIN EXPORT DESTINATIONS

- Panama

CERTIFICATIONS

- N/A



MUMA SAS

www.muma.co



- Producer and marketer of furniture for the corporate, educational and hospitality world. We produce and market tables, chairs, office systems, operating chairs and another for the corporate, educational and hospitality world.

PRODUCT PORTFOLIO

- Tables, chairs, office systems, operating chairs and other for the corporate, educational and hospitality world

VOLUME AND PRODUCTION CAPACITY

- N/A

CHANNEL

- N/A

BUSINESS MODEL

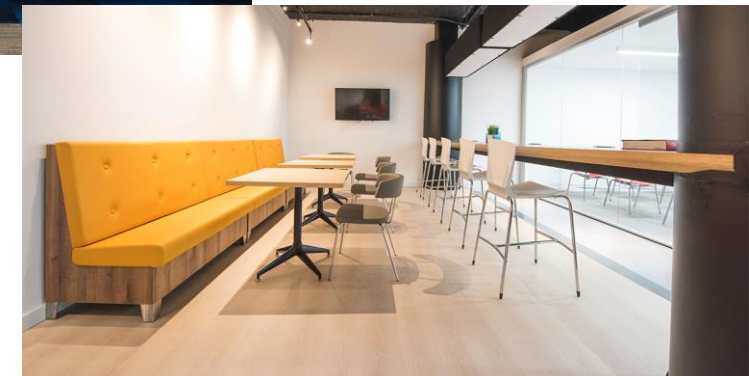
- N/A

MAIN EXPORT DESTINATIONS

- Panama and United States

CERTIFICATIONS

- N/A



PERCEPTUAL

www.perceptual.co

- Company dedicated to manufacture and design furniture. For their products to be perfect, they combine expert artisan hands that think in every detail and finish with the latest technology to develop unique proposals, and play with materials, colors and objects, in order to create functional, ergonomic, ingenious, simple pieces, timeless, fun and environmentally friendly.

PRODUCT PORTFOLIO

- Office Furniture Nightstands / Night Tables Children's Furniture Tables Sofas Storage Beds

VOLUME AND PRODUCTION CAPACITY

- According to the requirements agreed in the negotiation

CHANNEL

- Distributor, retail, own stores

BUSINESS MODEL

- Private Label
- Own brand

MAIN EXPORT DESTINATIONS

- Uruguay, Perú and Argentina

CERTIFICATIONS

- N/A



PURO CUERO

www.purocuero.com.co



- Company founded in Medellín in 1986. They currently control their entire production process from the arrival of fresh or salted cattle skins to their tannery, to the manufacture and sale of furniture in wood and leather, and automotive upholstery.
- Its points of sale are located in Bogotá, Cali, Barranquilla and Medellín.

PRODUCT PORTFOLIO

- Beds, sofas, dining tables, offices, and living rooms

BUSINESS MODEL

- Private label
- Own Brand

VOLUME AND PRODUCTION CAPACITY

- According to the requirements agreed in the negotiation

MAIN EXPORT DESTINATIONS

- United States and Spain

CHANNEL

- Point of sale
- Distributor

CERTIFICATIONS

- N/A



RECLINOMATIC

www.reclinomatic.com



- Leading company in the production and sale of furniture of rest, their products offer comfort, quality, design and good prices; its main purpose is to improve processes, products and services so that they meet the needs and expectations of customers, based on the capabilities of its human talent.

PRODUCT PORTFOLIO

- Chairs
- Furniture

VOLUME AND PRODUCTION CAPACITY

- According to the requirements agreed upon in the negotiation

CHANNEL

- Point of sale Retail - distributor

BUSINESS MODEL

- Own Brand
- Private label

MAIN EXPORT DESTINATIONS

- Ecuador

CERTIFICATIONS

- N/A



SCANFORM

www.scanform.com.co



- Scanform is a Colombian company, origin Swedish, a leader in the furniture sector, with more than 55 years of experience, able to evolve and adapt to the changes demanded by the market.
- Scanform creates versatile furniture solutions to create effective spaces. Living habitats that adapt to the user, creating clear relationships that maximize interaction and effectiveness.

PRODUCT PORTFOLIO

- Chairs Libraries Furnishing Of Office Accessories For Office Classroom Furnishing

VOLUME AND PRODUCTION CAPACITY

- According to the requirements agreed upon in the negotiation

CHANNEL

- Retail, Distribuidor

BUSINESS MODEL

- Own Brand
- Private label

MAIN EXPORT DESTINATIONS

- Panama and Costa Rica

CERTIFICATIONS

- N/A





USM

www.usmmaderas.com



- We are a family company that was founded in 1992. with more than 25 years of experience, we are dedicated to the transformation of wood for the development of products, exclusive designs, reforms and construction of new homes.

PRODUCT PORTFOLIO

- Decorative products in wood

VOLUME AND PRODUCTION CAPACITY

- According to the requirements agreed upon in the negotiation

CHANNEL

- Own shops
- Retail

BUSINESS MODEL

- Own Brand
- Private Label

MAIN EXPORT DESTINATIONS

- Israel and United States

CERTIFICATIONS

- N/A



MONTECARLO DOORS

www.montecarlodoors.com



- Montecarlo Doors is a manufacturer of high quality custom wood doors, wood flooring solid wide-plank, plantation shutters and hardwood products made by hand, for the hospitality, residential and commercial market.

PRODUCT PORTFOLIO

- Anti-hurricane doors
- Wooden Floors
- Custom Made windows

VOLUME AND PRODUCTION CAPACITY

- According to the requirements agreed upon in the negotiation

CHANNEL

- Distributor
- Retail
- Specialized stores

BUSINESS MODEL

- Own Brand
- Private Label

MAIN EXPORT DESTINATIONS

- United States and Puerto Rico.

CERTIFICATIONS

- N/A



MARCO MOBILIARIO

www.marcomobiliario.com



- Dedicated to the design, development and manufacture of architectural furniture on measure, we convert your needs and ideas of design and architecture in reality, work to create spaces with aesthetic, practical and functional environments.

PRODUCT PORTFOLIO

- Architectural Furniture

BUSINESS MODEL

- Own Brand
- Private label

VOLUME AND PRODUCTION CAPACITY

- According to the requirements agreed upon in the negotiation

MAIN EXPORT DESTINATIONS

- Ecuador and Panama

CHANNEL

- Distributor
- Retail

CERTIFICATIONS

- N/A



DELBELEN SAS

www.delben.co



- Company located in Free Zone of Cúcuta, producer of furniture for kitchen and modular bathrooms in agglomerated boards of wood for a high segment.
- It has an ECOSOSTENIBLE policy in all levels of production for it has state-of-the-art technology

PRODUCT PORTFOLIO

- Furniture for kitchens
- Furniture for bathrooms
- Closets

VOLUME AND PRODUCTION CAPACITY

- N/A

CHANNEL

- Construction companies and specialized distributors

BUSINESS MODEL

- N/A

MAIN EXPORT DESTINATIONS

- Mexico

CERTIFICATIONS

- N/A





FARM EQUIPMENT AND MACHINERY



PROCOLOMBIA
EXPORTACIONES TURISMO INVERSIÓN MARCA PAÍS

SYNERGY PACK SAS



<http://synergy-pack.com/>

- It is a Colombian company, dedicated to the manufacture commercialization and sale of automatic and semiautomatic machinery for the packing and packaging of all kinds of products.
- Synergy Pack has identified the current and potential needs of the industry, segmented into niche markets

PRODUCT PORTFOLIO

- Automatic and semi-automatic machinery for the packaging and packaging of all types of products

VOLUME AND PRODUCTION CAPACITY

- N/A

CHANNEL

- Distributors, food companies

BUSINESS MODEL

- N/A

MAIN EXPORT DESTINATIONS

- Peru, Ecuador, Panama

CERTIFICATIONS

- N/A





SUPERBRIX S.A.

www.superbrix.com



- Manufacture of machinery to process grains and cereals. Exporter of equipment for agro-industry

PRODUCT PORTFOLIO

- SB Separator Table, Shell Separator HSX-10, Scale Kiln Burner

VOLUME AND PRODUCTION CAPACITY

- N/A

CHANNEL

- N/A

BUSINESS MODEL

- N/A

MAIN EXPORT DESTINATIONS

- Philippines and Peru

CERTIFICATIONS

- N/A



INDUSTRIAS TORNOMETAL JR

www.industriastornometaljr.com



- Manufacturing and design of agroindustrial machinery, such as forage choppers, trapiches, plants for animal concentrates, mixers, silage harvesters, grain mills, panela pulverizers, elements for the production of panela, tuber graters, corn huskers and organic waste choppers .

PRODUCT PORTFOLIO

- Windmill
- Grater
- Trapiche

VOLUME AND PRODUCTION CAPACITY

- N/A

CHANNEL

- N/A

BUSINESS MODEL

- B2B

MAIN EXPORT DESTINATIONS

- N/A

CERTIFICATIONS

- N/A





INGEMAQ

www.ingemaqbello.com/



Bello S.A.S.

- Colombian Engineering Company, specialized in the design, production and supply of industrial machinery, committed to the development of the metalworking sector.
- They provide engineering solutions that allow manufacturing machinery, equipment, structures and high quality products.

PRODUCT PORTFOLIO

- Potato washer, conveyor belts, dehydrator, lathe for handicrafts

VOLUME AND PRODUCTION CAPACITY

- N/A

CHANNEL

- N/A

BUSINESS MODEL

- B2B

MAIN EXPORT DESTINATIONS

- N/A

CERTIFICATIONS

- N/A



ADIPACK

www.adipack.com.co/



- We specialize in the manufacture of aseptic milk packing machines, oats, milk creams, ice cream bases, fruit pulp and fruit nectar under UHT process (long life) packed in flexible bag, which provide as benefits: high speed packaging , energy saving, control and precision, increased production, among others.

PRODUCT PORTFOLIO

- Latest generation UHT F.F.S Aseptic Packing Machine

VOLUME AND PRODUCTION CAPACITY

- 5 machines/año

CHANNEL

- Direct sale
- Intermediary

BUSINESS MODEL

- Own Brand

MAIN EXPORT DESTINATIONS

- Ecuador, Bolivia, Mexico

CERTIFICATIONS

- N/A



FORJAS BOLÍVAR

www.forjasbolivar.com



- Metalworking company specialized in the manufacture of spare parts for the cement industry, mining, oil and general heavy industry. Industrial Line; fasteners, refractory anchors, chains, shackles and accessories for cement kilns, engineering chains for conveyors and elevators. Commercial line: agricultural tools and carpentry.
- It has been in the market for 50 years and is currently the leader in America, exporting to more than 18 countries. It offers the assembly services for its products, as well as the system optimization service.
- Forjas Bolívar S.A.S is committed to the manufacture of products with high quality standards and the preservation of the environment.

PRODUCT PORTFOLIO

- Conveyor belts for cement industry, steel industry
- Fastening bands

VOLUME AND PRODUCTION CAPACITY

- According to availability

CHANNEL

- Points of sale
- Final client

BUSINESS MODEL

- According to project, specialized development according to requirements and industry

MAIN EXPORT DESTINATIONS

- Ecuador, Bolivia

CERTIFICATIONS

- ISO 9001, U.S GREEN BUILDING COUNCIL



EMPRESA DE SOLUCIONES SERVICIOS E INNOVACION - ESSI



www.essi.com.co/

- Manufacture of Machinery for UHT Dairy Processes and Liquid Foods from Storage to the End of the Line, especially of liquid packaging machines in bags.

PRODUCT PORTFOLIO

- Manufacturing, Automation, BPO, Engineering

VOLUME AND PRODUCTION CAPACITY

- 20 units per year

CHANNEL

- Direct sale, B2B, commercial representative or distributor

BUSINESS MODEL

- Full package

MAIN EXPORT DESTINATIONS

- Mexico, Ecuador

CERTIFICATIONS

- Colombian Institute of Technical Standards and Certification ISO 9001, Colombian Institute of Technical Standards and Certification ISO 14001, Colombian Institute of Technical Standards and Certification OSHAS 18001. ISO 22000. ISO NORSOKS-006.





- DDI S.A. is a company that offers engineering solutions, especially in the area of automation and control, developing and integrating electronic systems and equipment with a great addition of knowledge and application of specialized software.
- Complete requests are made so that the manufacturing or service companies can obtain the production of data in real time, with complete connection of the equipment through the Intranet or simply the local network, as a fundamental part of the business.
- Engineering, design, assembly and manufacture of control panels for machinery or processes, using modern automation equipment and specialized software for control and data acquisition. Design and manufacture of machines for automatic labeling.

PRODUCT PORTFOLIO

- Labeling machine
- Control panel

BUSINESS MODEL

B2B

VOLUME AND PRODUCTION CAPACITY

- N/A

MAIN EXPORT DESTINATIONS

- United States

CHANNEL

- N/A

CERTIFICATIONS

- N/A



CIA GENERAL DE ACEROS S.A.

www.cga.com.co



- Colombian company dedicated for more than 59 years to the commercialization and industrialization of special steels. They have a supply line of materials, industrial transformation (metal mechanic, automotive industry, graphic industry), integral solutions (construction, hydrocarbons). , mining, transportation, agriculture, gas) and stainless steel line.

LÍNEAS DE PRODUCTO

- Steel solutions for different industries

VOLÚMEN Y CAPACIDAD DE PRODUCCIÓN

- N/A

CANAL

- Projects, direct client, importers, distributors.

MODELO DE NEGOCIO

- N/A

PRINCIPALES DESTINOS DE EXPORTACIÓN

- Ecuador, Spain, Costa Rica and Panama

CERTIFICACIONES

- ISO9001



ACEROS INDUSTRIALES SAS

www.acerosindustriales.com



- Company that transforms and commercializes special steels, high machinability brass, copper and brass wires and straps. Founded in the city of Medellín in the year of 1977. We are currently located in Itagüí (Antioquia) where the production plant operates, cutting services center and sales room. In Bogotá we have a winery and service center in the Paloquemao sector.
- We transform rods, calibrated and drawn wires in carbon steels and highly machinable brass, import and market finished products in bonded, annealed, hot rolled or turned state.

PRODUCT PORTFOLIO

- Solid round bars, square, plates, hexagonal, perforated bars in steels 1018, 1020, 1045, 4140, 1518

VOLUME AND PRODUCTION CAPACITY

- According to availability

CHANNEL

- Distributors

BUSINESS MODEL

- According to customer and industry requirements

MAIN EXPORT DESTINATIONS

- Venezuela, Ecuador

CERTIFICATIONS

- ISO9001



FUNDICIONES TORO RAMÍREZ

www.fundalco.com



- Given our infrastructure, we are a company capable of offering integral solutions to the industry of the country, our production line starts in the smelting furnaces for both gray iron and aluminum and continues in the machining section.
- Due to the recognized experience in the agricultural sector, especially with banana, flower and African palm companies, we can offer integral solutions for transporting products through cable-ways to the interior of the plantations. Our pulleys (rolas) are our own developments, they are products that are now known and used in almost all plantations of banana, flowers and African palm. Given our character as manufacturers, we offer a direct guarantee for 1 year.

PRODUCT PORTFOLIO

- Garruchas
- Cable tracks
- Foundry

VOLUME AND PRODUCTION CAPACITY

- According to availability

CHANNEL

- Distributors

BUSINESS MODEL

- Own Brand

MAIN EXPORT DESTINATIONS

- Dominican Republic, Belize, Guatemala

CERTIFICATIONS

- ISO 9001
- ISO 14001
- OHSAS 18001



HERRAGRO S.A

<http://www.herragro.com/>

- Compañía colombiana fundada en 1960 por inversionistas colombianos y británicos (Chilligton Tools), dedicados a la fabricación de herramientas forjadas y no forjadas para los sectores Agrícola, construcción y minería.



LÍNEAS DE PRODUCTO

- Carretas, Herramientas agrícolas, Herramientas construcción Herramientas de poder

MODELO DE NEGOCIO

- Marca privada y marca blanca

VOLÚMEN Y CAPACIDAD DE PRODUCCIÓN

- N/A

PRINCIPALES DESTINOS DE EXPORTACIÓN

- Brasil, Ecuador y Chile

CANAL

- Distribuidor, Constructor, Representante, Retail, Institucional, Tiendas por departamento Grandes superficies

CERTIFICACIONES

- N/A



CENTRO ACEROS

<http://www.centroaceros.com>



- Centro Aceros S.A.S was founded in Colombia in 1987. We have evolved from being a producer of steel bars and wire, to being a production and engineering company with three business units: Cable Roads, Calibrated Steels and Crane Bridges.
- Centro Aceros has three world-class plants equipped with qualified personnel and high-tech equipment for the manufacture of its products. Our company is certified under the ISO 9001: 2008 standard granted by BVQI with a strong commitment for quality, cost efficiency, productivity and service in our plants and processes

PRODUCT PORTFOLIO

- Bridge cranes
- Cable tracks
- Calibrated steels

VOLUME AND PRODUCTION CAPACITY

- According to availability

CHANNEL

- Distributors

BUSINESS MODEL

- According to customer and industry requirements

MAIN EXPORT DESTINATIONS

- Philippines, Cote d'Ivoire, Ghana, Republic of Cameroon

CERTIFICATIONS

- ISO 9001



INDUSTRIAS AVM SA

www.penagos.com



- AVM S.A. is an engineering and metal-mechanic manufacturing company that specializes in providing integral solutions for: Palm and biofuel agribusiness, open-pit mining operations, explosives production, metal structure and design.

PRODUCT PORTFOLIO

- Integral solutions: structure, palm oil - biodiesel
- Structural Profiling

VOLUME AND PRODUCTION CAPACITY

- 300 Ton / Month - 250 Units of Equipment per year

CHANNEL

- Direct

BUSINESS MODEL

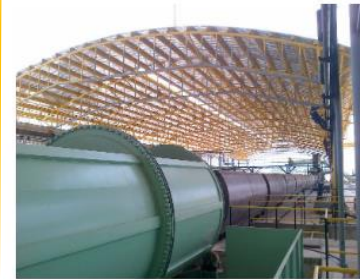
- Own brand

MAIN EXPORT DESTINATIONS

- El Salvador, Peru, Nicaragua

CERTIFICATIONS

ORSOK S-006-2003
ISO 9001/2008 – ISO 14001/2004
– OHSAS 18001/2007



METALECO

<https://metalteco.com>



- Manufacturer of palm oil processing plants, plants for the manufacture of concentrates for animals and storage systems, construction of docks for ports, for unloading and distribution, adaptations to port infrastructure and equipment for food processing. They are the leading company nationwide.

PRODUCT PORTFOLIO

- Machinery for concentrated food
- Palm oil extraction

VOLUME AND PRODUCTION CAPACITY

- N/A

CHANNEL

- Direct

BUSINESS MODEL

- Own brand

MAIN EXPORT DESTINATIONS

- N/A

CERTIFICATIONS

- N/A



- Company specialized in the production of equipment for the industrial process of cereals such as Receipt, Elevation, Transportation, Pre-cleaning, Cleaning, Drying and Storage Systems. Rice milling and Systems for the handling, dispatch and storage of grains in seaports

PRODUCT PORTFOLIO

- Biomass cyclone kilns, Pre-cleaning tower, Cereal tower dryers, Bucket elevators, Chain conveyors, Band conveyors

VOLUME AND PRODUCTION CAPACITY

- In order corresponding to the products: 2 units / month, 2. 2 units / month, 2 units / month, 10 units / month, 10 units / month, 6. 10 units / month

CHANNEL

- Direct sales

BUSINESS MODEL

- Own brand

MAIN EXPORT DESTINATIONS

- Haiti, Panama y Ecuador

CERTIFICATIONS

- N/A



INAL – INDUSTRIAS ACUÑA

www.maqymon.com



- Company specialized in the design, manufacture, assembly, maintenance and repair of parts, spare parts, industrial equipment, machinery and industrial plants for sectors such as palm oil extraction, agroindustry, hydrocarbons and science and technology.



PRODUCT PORTFOLIO

- Oil extraction plants, Hydrocyclone sand trap, Dynamic sterilizers, Milk ripple mills and nut breaker, Brush filter

VOLUME AND PRODUCTION CAPACITY

- Corresponding to list of products: 4 units / year, 2. 8 units / month, 10 unit / year, 24 unit / year, 2 units / year

CHANNEL

- Own stores, commercial agents

BUSINESS MODEL

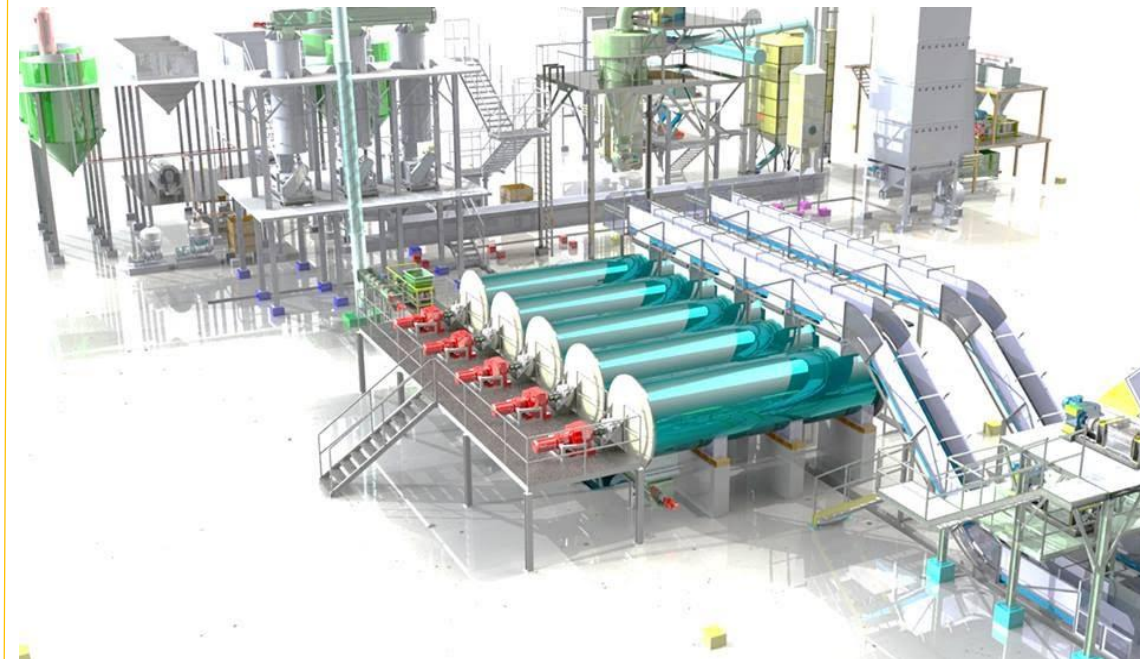
- Own Brand
- Private label

MAIN EXPORT DESTINATIONS

- Costa Rica, Panama, Guatemala

CERTIFICATIONS

- ISO 9001:2015 NTC
- ISO 14001:2015 NTC



PENAGOS HERMANOS



www.penagos.com

- Company of the metalworking sector that develops and produces machinery for the agricultural industry, cereals, sugar mills and for coffee processing (individual equipment or complete projects for the benefit of coffee).

PRODUCT PORTFOLIO

- Trapiche Horizontal TH - 8,
Unit of Despulpe UDC 1, Unit
of Despulpe UDC 6, UC
Beneficio Ecológico 2,500

VOLUME AND PRODUCTION CAPACITY

- According to the order of
products: N.D., 30 Units /
Month, 35 Units / Month, 30
Units / Month

CHANNEL

- Direct sale
- Dealers

BUSINESS MODEL

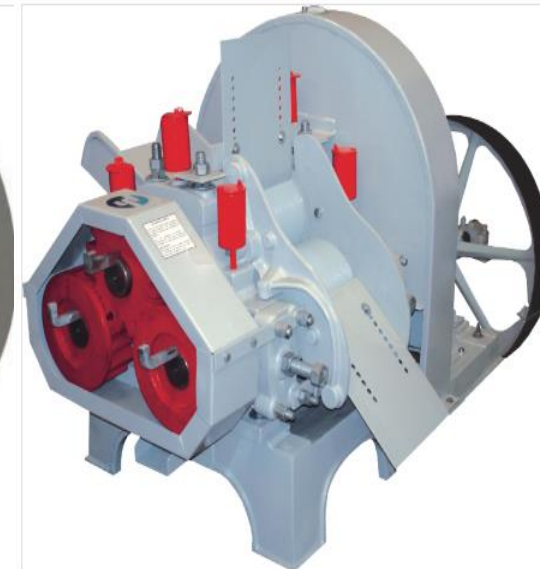
- Own Brand

MAIN EXPORT DESTINATIONS

- Ethiopia, Costa Rica,
Nicaragua, Uganda

CERTIFICATIONS

- ISO 9001:2000
- BASC



INDUSTRIAS LAVCO

<http://lavco.com.co>



- We produce and market centrifuged gray cast iron sleeves for the vast majority of Diesel and Gasoline vehicles. We also produce in the industrial line, shirts for industrial stationary engines, compressors and reciprocating pumps in a wide variety of ranges; likewise, we provide the repair service of reciprocating compressor cylinders. Thanks to our own smelting plant, we manufacture, among other parts, pistons in gray iron and aluminum, cast pieces in bronze, nodular iron, molded parts such as gratings and grills for industrial plants and make repairs of parts for equipment in the industrial sector.

PRODUCT PORTFOLIO

- Manufacturing, casting, machining and maintenance; Assembly and machining of industrial parts; Repairs of industrial parts; Development of solutions; Operation and maintenance

VOLUME AND PRODUCTION CAPACITY

- 32,000 un/month

CHANNEL

- Commercial Agents (Distributors), Spare Parts or Grinding Companies

BUSINESS MODEL

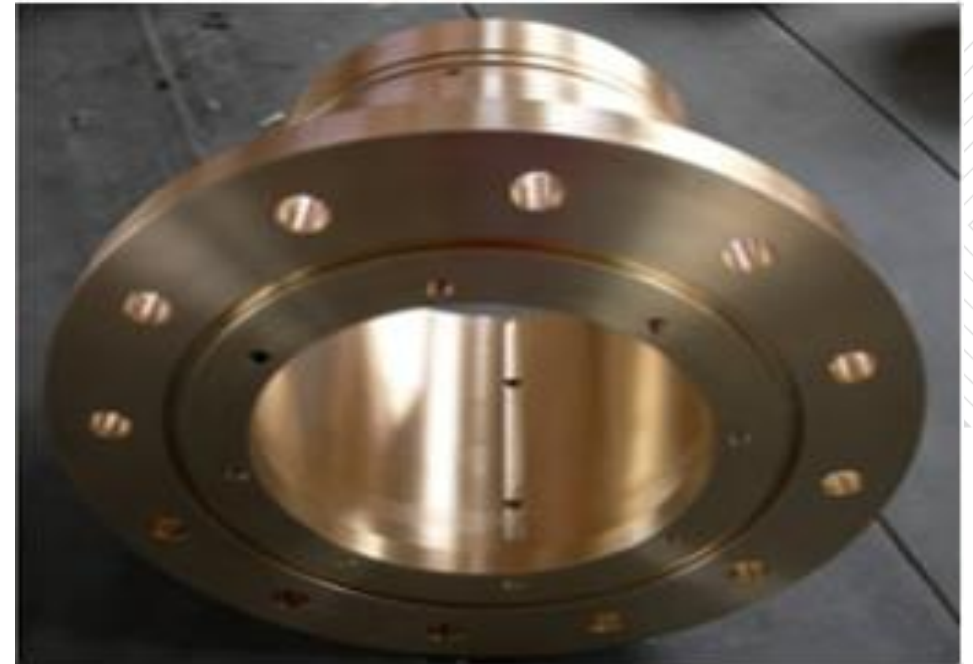
- Marca propia

MAIN EXPORT DESTINATIONS

- United States, El Salvador, Guatemala, Ecuador

CERTIFICATIONS

- ISO 9001:2008



SICOLSA

<http://www.sicolsa.com/>



- Sicolsa is a foundry company and provides solutions in nodular iron, gray and special, directed to the automotive sector, agricultural, aqueducts, industrial and electrical

PRODUCT PORTFOLIO

- Automotive sector (parts for chassis, brakes and clutches), Hand tools and parts for agroindustrial machinery, parts for the repair and installation of aqueduct and sewerage networks, fittings for the installation of power lines and manufacture of electrical insulators, casting and processes of industrial machining

VOLUME AND PRODUCTION CAPACITY

- N/A

CHANNEL

- Representative, industrial, institutional, broker / commercial agent

BUSINESS MODEL

- Replacement equipment
- Private label
- Own brand

MAIN EXPORT DESTINATIONS

- United States, Ecuador, China

CERTIFICATIONS

- N/A



INDUSTRIA SATECOL SA

www.satecolsa.com

- Company dedicated to the manufacture of rubber rollers for dehulling rice paddy.

PRODUCT PORTFOLIO

- Rubber rollers for rice huskers - paddy

VOLUME AND PRODUCTION CAPACITY

- To be arranged according to the client's needs

CHANNEL

- N/A

BUSINESS MODEL

- To be agreed upon

MAIN EXPORT DESTINATIONS

- Peru, Mexico, Panama, Chile

CERTIFICATIONS

- ISO9001



PROPULSORA SA



<http://www.propulsora.com.co>

- Company dedicated to the production, marketing and distribution of non-ferrous products and alloys such as aluminum, copper, zamak, tin solder, bronzes, brass, sacrificial anodes, alloys for jewelery, lead sheets for X-rays, babbits.

PRODUCT PORTFOLIO

- Production of Non-ferrous Metal Alloys.

VOLUME AND PRODUCTION CAPACITY

- To be agreed according to the needs of the client

CHANNEL

- N/A

BUSINESS MODEL

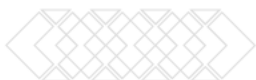
- To be agreed upon

MAIN EXPORT DESTINATIONS

- Panama, Ecuador

CERTIFICATIONS

- ISO 9001
- Bureau Veritas



FUNDELIMA

<http://fundelima.com/>



- FUNDELIMA is dedicated to the manufacture and marketing of a wide range of castings in ductile iron, gray iron and its alloys, with sizes from 50mm to 2000mm in diameter, length up to 2mts and 3500 kg in weight, with excellent quality for the different sectors as: Ports, airports, construction and industries, aqueducts and sewerage.

PRODUCT PORTFOLIO

- Pieces in ductile iron for the different sectors such as: Ports, airports, construction, aqueducts and sewerage, industry and pavements

VOLUME AND PRODUCTION CAPACITY

- N/A

CHANNEL

- N/A

BUSINESS MODEL

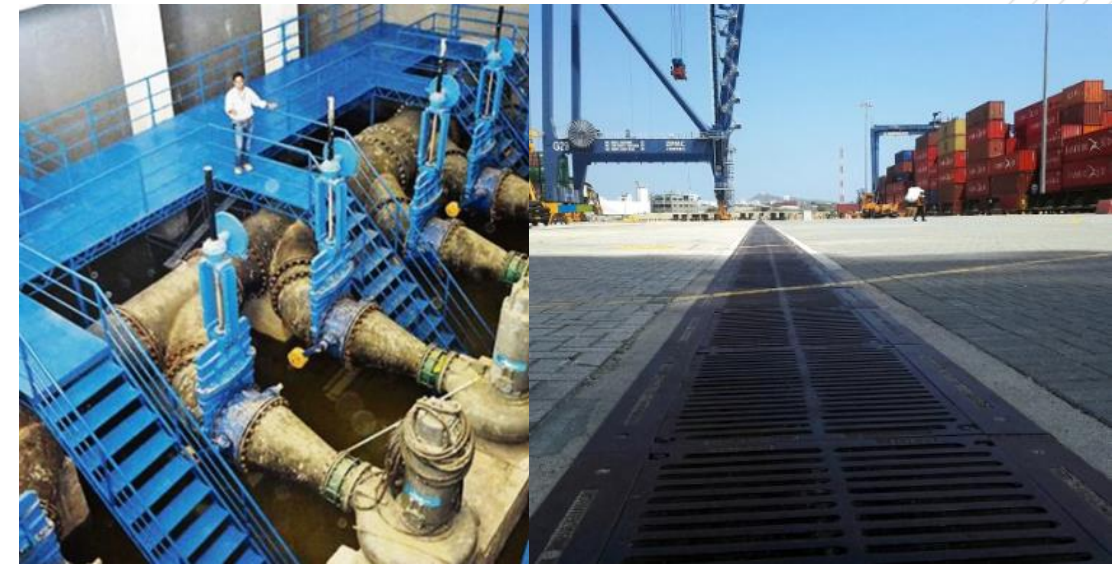
- Projects
- Others

MAIN EXPORT DESTINATIONS

- Panama, Costa Rica, Peru

CERTIFICATIONS

- ISO9001, AWWA, UNE EN 124
- Colombian Institute of Technical Standards and Certification



- Company providing equipment and solutions for the Colombian agroindustrial sector. It distributes CASE IH equipment and acts as a representative of PRAJ in the biofuel production business and to Detroit Stocker for power generation equipment.

PRODUCT PORTFOLIO

- Equipment and solutions for the agroindustrial sector.

VOLUME AND PRODUCTION CAPACITY

- To be agreed upon

CHANNEL

- N/A

BUSINESS MODEL

- To be agreed upon

MAIN EXPORT DESTINATIONS

- Panama

CERTIFICATIONS

- ISO9001



PROGEN SA

www.progen.com.co



- Dedicados a la fabricación de equipos de bombeo, corte, maquinaria agrícola, fumigadoras de espalda y manuales. Cuentan también con una línea de señalización vial

PRODUCT PORTFOLIO

- Machinery and tools for fumigation and gardeners. Manufacture of packaging and industrial instrumentation. Modular signage. Mopeds

VOLUME AND PRODUCTION CAPACITY

- According to requirements

CHANNEL

- Distributors, Importers, Wholesalers

BUSINESS MODEL

- N/A

MAIN EXPORT DESTINATIONS

- United States, Brazil, Ecuador

CERTIFICATIONS

- ISO 9001, BASC, Onac



BELLOTA

www.bellota.com/CO/es/

- They develop businesses oriented to provide quality products and solutions to customers and users in the Construction, Agriculture and Gardening sectors.
- Manufacture of cutlery, hand tools and hardware



PRODUCT PORTFOLIO

- Hand tools for working in agriculture and construction
- Products for plowing and tillage

VOLUME AND PRODUCTION CAPACITY

- N/A

CHANNEL

- Distributor, representative, broker / commercial agent, retail, department stores, industrial

BUSINESS MODEL

- Own Brand
- Private label

MAIN EXPORT DESTINATIONS

- Peru, Ecuador, Argentina

CERTIFICATIONS

- N/A



IDEAGRO

www.ideagro.com/

IDEAGRO

- Ideagro is a company with more than 15 years of experience in the manufacture and assembly of machinery for the agricultural sector.
- We offer reliable equipment at reasonable prices and perform their tasks well, allowing more small and medium farmers and ranchers to produce and compete more efficiently. By doing this we contribute to sustainability in the field and allow many people to improve their living conditions.

PRODUCT PORTFOLIO

- Harvesters, fodder and mixers, silage, compost and manure, trailers, hay, mowers, windrowers, sprayers, parts and spare parts

VOLUME AND PRODUCTION CAPACITY

- N/A

CHANNEL

- Distributors and importers

BUSINESS MODEL

- N/A

MAIN EXPORT DESTINATIONS

- Panama, Guatemala, Dominican Republic, Mexico, Ecuador, India.

CERTIFICATIONS

- N/A



INVERMEC

<http://www.incolma.com>



- Producers of hand tools for agriculture and construction such as machetes, shovels, limes. They also produce scissors for the textile sector and bits of different sizes. The company produces about 70% of the machetes in the world and exports to more than 50 countries in the 5 continents

PRODUCT PORTFOLIO

- Drill bits, Tools, Blades, Carpentry, Machetes, Dressmaking / Scissors, Plumbing, farming

VOLUME AND PRODUCTION CAPACITY

- N/A

CHANNEL

- Distributor, representative, broker / commercial agent, retail, department stores, industrial

BUSINESS MODEL

- Own Brand
- Private Label

MAIN EXPORT DESTINATIONS

- Mexico, Peru, United States

CERTIFICATIONS

- N/A



GRUPO LONI

www.agrorepuestosloni.com



- Empresa del sector metalmecánico donde se diseña, fabrica y repara maquinaria e implementos agrícolas.



PRODUCT PORTFOLIO

- Trailer, Semitrailers, Self-loading Baskets, Fertilizer spreaders, Fertilizer spreaders, Urea suppliers, Harrows, Spreaders, Plow chisel, etc.

VOLUME AND PRODUCTION CAPACITY

- To be agreed upon

CHANNEL

- N/A

BUSINESS MODEL

- To be agreed upon

MAIN EXPORT DESTINATIONS

- N/A

CERTIFICATIONS

- N/A





FUNDICIONES INDUSTRIALES FINSA

www.fundicionesindustriales.com/



- Located in the village of San Cristóbal in the municipality of Medellín, Fundiciones Industriales SAS, also known as FINSA, is a company that belongs to the metal-mechanic sector, dedicated to the manufacture of parts by means of casting ferrous metals such as gray iron, white, nodular, high chromium and Ni - Hard.
- The products are aimed at satisfying the needs of customers in the sectors of the industry of the mechanical, automotive, cement, civil, construction, food, goldsmith, metalworking, agroindustrial, gyms, among others.

PRODUCT PORTFOLIO

- Urban furniture, grids, food mills and hardware products, pulleys for gym equipment

VOLUME AND PRODUCTION CAPACITY

- According to availability

CHANNEL

- Distributors

BUSINESS MODEL

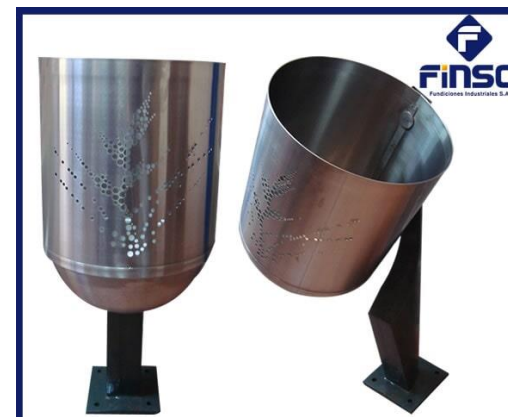
- Own Brand

MAIN EXPORT DESTINATIONS

- Ecuador and United States

CERTIFICATIONS

- N/A



**Basurera
Pivotante Tipo Edu**

Material:
base en Fundición de Hierro Nodular
Norma ASTM A536 65-45-12 y contenedor y pines en acero inoxidable.



**Discos Tipo
Mancuerna
Cromados**

* Referencias:
Disco tipo mancuerna cromado de 2.5 lbs
Disco tipo mancuerna cromado de 5 lbs
Disco tipo mancuerna cromado de 10 lbs
Disco tipo mancuerna cromado de 15 lbs
Disco tipo mancuerna cromado de 20 lbs
Disco tipo mancuerna cromado de 25 lbs
* Material: Fundición Hierro Gris



**Reja Sumidero
En V Tipo EDU**

Material: Fundición de Hierro Nodular Norma ASTM A536 65-45-12
Dimensiones: 28 cms de ancho x 58 cms de longitud x 4,3 cms de espesor



**Bomba
Aspirante
Impelente**

* Utilizada para la extracción en pozos hasta 7 metros de profundidad
* Cabeza: Elevación a Tanques hasta 12 metros del nivel de la bomba.
* Conexión de aspiración diámetro: 1" 1/4 NPT y 2 salidas de 1" NPT.
* Caudal: 1,200 Litros por hora.



TAIKU PALDIES ΕΥΧΑΡΙΣΤΩ TANAN благодаря
SHUKRAN DANKE TERMA KASSIH DÍKY
GRATIAS 감사합니 MATONDO MAAKE NANNI DIAKUIU
HVALA THANK YOU MERCI MOCHCHAKKERAM DIOLCH
TÄNAN SPASIBO дякую FALEMINDERIT
GRACIAS

הודות ASANTE CHOKRANE ESKERRAK MISAOTRA GRAZIE
谢谢 OBRIGADO ARIGATO VINAKA
SULPÁY SPASIBO
DIOLCH ACIU DIOLCH WELALIN TAK KÖSZÖNÖM
EKELE NGIYABONGA MATUR NUWUN KIITOS DZIĘKUJĘ